

# Qui piu lucente à3

Raffaello Rontani (fl. 1610 - 1622)

Le varie Musiche a uno e due voci - Roma - G. B. Robletti - 1622

C

Qui piu lu - cen-te'ancor la nott'om - brosa,

A

8

Qui piu lu - cen-te'ancor la nott'om - bro-sa, i

B

6

i bei campi del Ciel di stelle'in fio-ra,

8

— beicampidel Ciel di stelle'ifio - ra,

7 6

5 6

13

e quispie - gan - do'il suo bellume'a - dor - no, la nott'e bel la piu ch'al trom'il

8

e quispie - gan - do'il suo bellume'a - dor - no,

19

giorno,

la nott' e bel - la,

8

la nott'e bel-la piu ch'al tro-v'il gior-no, la nott'e bel - la, la

24

la nott' e bel - la piu ch'al - tro-v'il gior - no.

8

nott'e bel - la piu ch'al-tro - v'il gior - no.

7 6

## Qui piu lucente à3

Raffaello Rontani (fl. 1610 - 1622)

Le varie Musiche a uno e due voci - Roma - G. B. Robletti - 1622

3  
5

Qui piu lu - cen - te'an-cor la nott' om -

bro - sa, i bei cam - pi del Ciel

11

14 — di stel-le'in fio - ra, e qui spie -

17 gan - do'il suo bel lu-me'a - dor - no, la

20 nott'e bel - la piu — ch'al trom' il gior - no,

2  
24 la nott'e bel - la,

26 la nott'e bel - la piu ch'al -

tro - v'il gior - no.

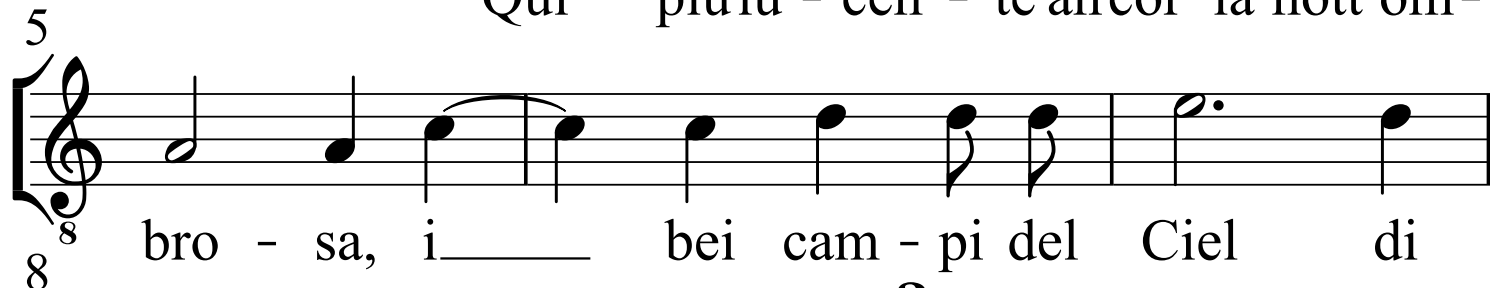
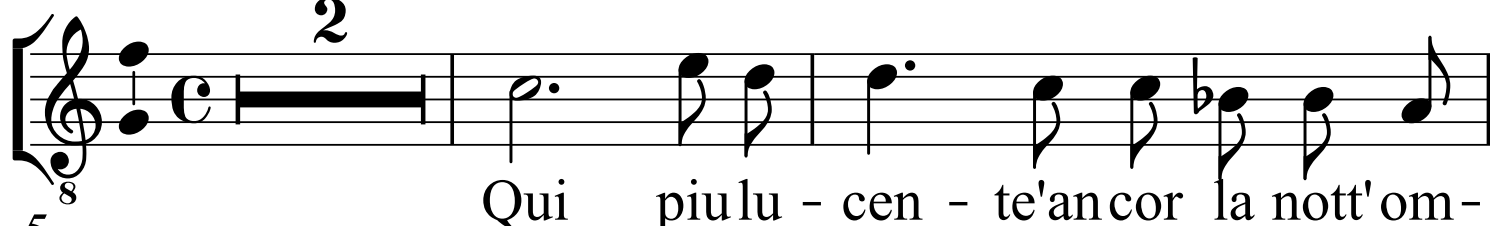
Alto

# Qui piu lucente à3

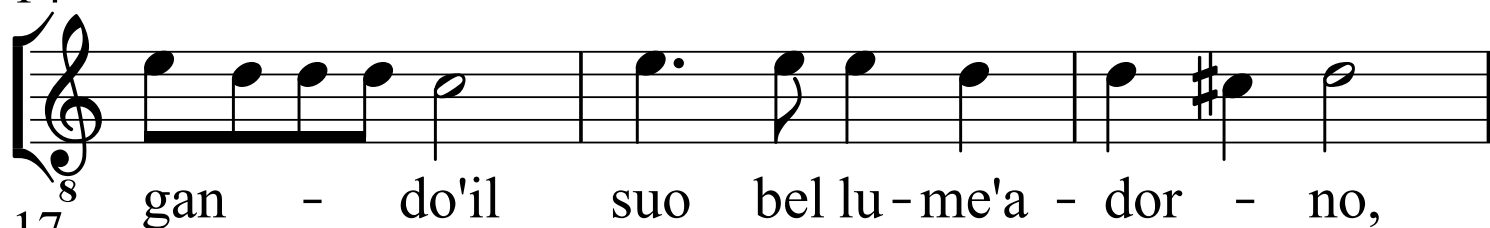
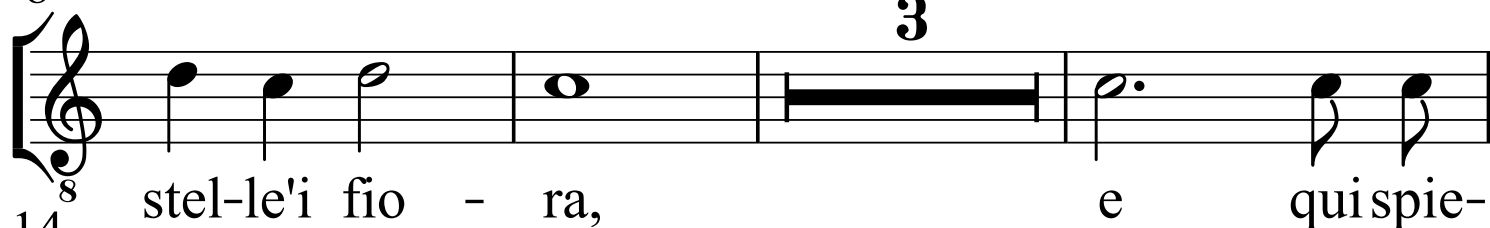
Raffaello Rontani (fl. 1610 - 1622)

Le varie Musiche a uno e due voci - Roma - G. B. Robletti - 1622

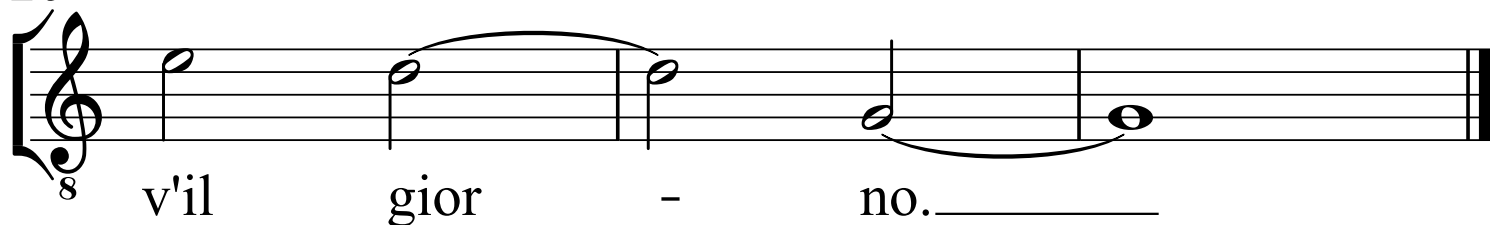
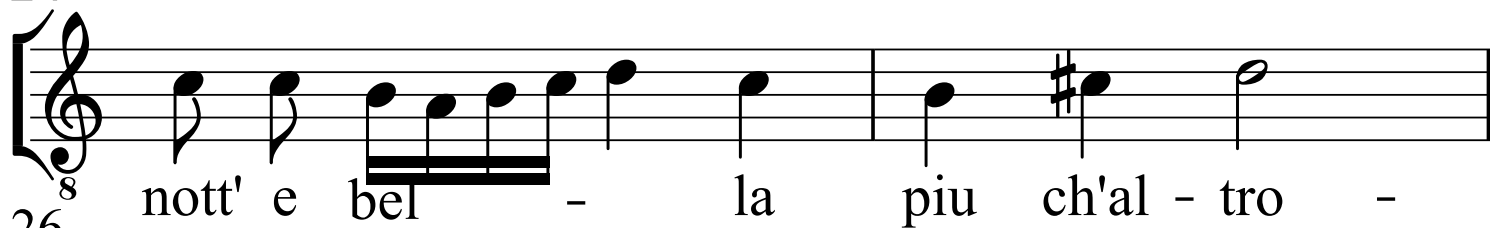
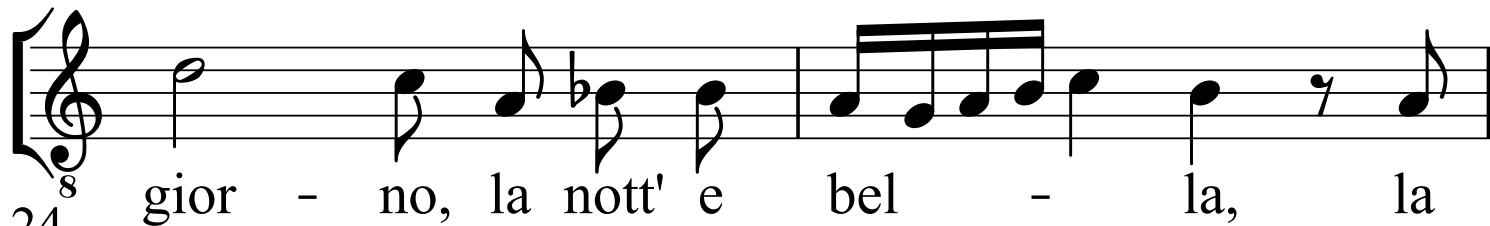
2



3



2



# Qui piu lucente à3

Le varie Musiche a uno e due voci - Roma - G. B. Robletti - 1622

A musical staff in bass clef showing the bass line of 'The Rose Tree'. The melody consists of eighth and quarter notes. Above the first measure is a '6' and below it is a '7 6', indicating a 6-7-6 interval pattern.

[illegible]

15

Measure 15 (bass clef) contains the following notes: G2 (quarter), A2 (quarter), B2 (quarter), C3 (quarter), D3 (quarter), E3 (quarter), F3 (quarter), and G3 (quarter). A sharp sign (#) is placed below the staff, indicating a key signature change or a specific fingering instruction.

[illegible]

24